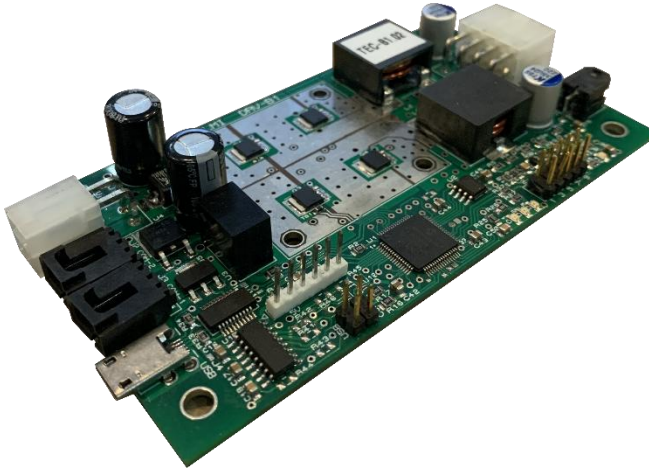


TCW-1525

15A/25V Temperature Controller

The TCW-1525 is a current driver designed to control the temperature of thermal systems. Includes a user interface with tools for controlling, monitoring and calibration. It is fully controllable and configurable through a USB digital interface and has analog I/O for monitoring and control.



Features:

- Configured as a temperature controller
- Bipolar output current up to $\pm 15A$
- Micro USB digital communication
- Intuitive User Interface with auto calibration support
- Input port supports NTC and RTD temperature sensors
- Supports daisy chaining with up to 8 other controllers
- Recommended fan cooling for average currents above 5A

Specifications:

Output Current	$\pm 15A$
Output Voltage	$\pm 24V$
Ripple Frequency	$> 300\text{ kHz}$
Control	Analog or Digital
Dimensions	115mm x 64mm x 15mm
Operating Temperature	0 to 55 °C

